



Safer Gloucester Plan

2011-2012



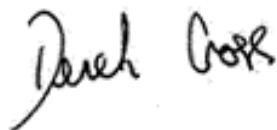
Safer Gloucester Plan 2011-2012

Welcome from the Chair of Safer Gloucester

Safer Gloucester has come a long way since the Crime and Disorder Act of 1998. By collaborative working we have enjoyed a continuing reduction in crimes of local concern with a further reduction of 5.5% in 2010/2011.

However, we are facing a difficult year ahead with all partners adapting to a tougher budgetary regime with staff restructuring and service delivery changes. The Home Office have allocated funding for 2011/12 to community safety partnerships to continue the excellent work already taking place. However the funding to Safer Gloucester was reduced from £144,413 to £50,009 which will have a big impact on the community safety activity carried out across the city. This year will be a transitional year leading to the first elections of Police and Crime Commissioners, which may be as early as May 2012, who will be responsible for any future funding allocation.

We know that crime and feeling safe matter to our residents. Our key task is to keep Gloucester safe and we will do that by prevention (it is better to stop something from happening than to try and fix it after the event), protection (protect people, property and places by undertaking a range of statutory and enforcement duties) and response (providing a response if an emergency occurs – not just attending fires, road traffic collisions, flooding but also response services for domestic and sexual abuse, drug and alcohol treatment and anti social behaviour).



Derek Cross

Chair of Safer Gloucester 2011/12

Vision Statement

Safer Gloucester is committed to working in partnership to reduce crime, the fear of crime and anti social behaviour effectively and efficiently. In doing so, it will be inclusive and empowering of the community it serves.

Introduction

This is the 2011-2012 Delivery Plan introduced by Safer Gloucester. We will continue the best practice achieved in previous plans whilst developing and improving our strategy and working practices throughout the life of this plan. We will aim to reduce duplication of services and support other partnership plans. This delivery plan covers the key issues of concern as identified as local priorities for Gloucester by residents through community consultation. One of our key aims is to keep residents informed of actions taken and services delivered. The plan also builds on the Gloucestershire Community Safety Scanning Autumn 2010 document which set out an analysis of crime and disorder and helped to identify the priorities upon which the partnership will focus its efforts.

The Gloucestershire Community Safety Scanning Autumn 2010 document can be accessed at <http://www.gloucestershire.gov.uk/inform/scanning> .

Whilst Safer Gloucester will be focused on the need to make savings in 2011/12, they will be taking actions and achieving outcomes – cutting crime and reducing harm.

Gloucester Today

Statutory Crime and Disorder Reduction Partnerships followed the Crime and Disorder Reduction Act 1988. They became Community Safety Partnerships in April 2010 – in Gloucester it is called Safer Gloucester.

Gloucester has a population of 119,700 (2008) with a considerably higher proportion of young and working age people than the rest of the county. The black and minority ethnic population stands at 9.8% (2007).

Gloucester is ranked 118 in the deprivation index out of 354 local authority areas in England. Four of its wards (Podsmead, Kingsholm and Wotton, Matson and Robinswood and Westgate) are amongst the 10% most deprived in the country. Additionally there are areas (including Longlevens and Hucclecote) that feature in the top 10% most affluent.

Gloucester is undergoing a programme of regeneration with Gloucester Quays designer outlet opening and Gloucestershire College relocated: the King's Quarter being discussed with developers.

Gloucestershire Constabulary

Gloucestershire Constabulary have restructured their entire force of Police Officers and Police Community Support Officers. Previously, Gloucestershire was divided into three divisions for policing purposes: Forest and Gloucester, Stroud and Cotswolds and Cheltenham and Tewkesbury.

From 1st April, Gloucestershire is divided into six districts, to coincide with the district council areas. Superintendent Gary Thompson is in charge of the Gloucester Local Policing Area, assisted by Chief Inspector Richard Burge. Gloucester is divided into two local policing teams: Gloucester City which covers the city centre; Hempsted, Kingsholm, Wotton, Barton, Tredworth and White City and Gloucester District, which covers Matson, Robinswood, Podsmead, Tuffley, Grange, Quedgeley, Hucclecote, Abbey and Upton St Leonards, Barnwood, Moreland, Longlevens and Elmbridge. Gloucestershire Constabulary are monitoring the change process closely and are striving towards their main aims of keeping our communities safe, improving relationships with local people and dealing effectively and efficiently with criminals who commit crime.

The Home Secretary has set the Police one mission: to cut crime. In the future, possibly as early as from 2012 the Police will be accountable to their communities through Police and Crime Commissioners, instead of the Home Office.

Engaged and Active Communities

Cooperation from our communities is vital to the work of Safer Gloucester. We endeavour to be open and transparent in all our activity, inviting members of the public to an open forum meeting twice yearly. At this meeting, reports are given of partnership achievements and residents are invited to put questions to Safer Gloucester's lead members. Activities are regularly reported on the Safer Gloucester website www.safergloucester.co.uk and quarterly newsletters are produced and distributed through local community groups.

Three times a year Safer Gloucester holds a "Have your say" event in different localities where residents are visited and asked their views of life in their area and if they are affected by any crime or anti social behaviour issues. Responses are analysed, action taken wherever possible and reports delivered to the community.

Additionally, individual agencies perform their own community involvement and consultation events, inviting residents to be part of the solution to any problems raised. Communities do have a desire to get involved: the new street level crime and anti-social behaviour maps on www.police.uk attracted 310 million hits in its first week (nationally).

Safer Gloucester is keen to raise public confidence in the activity that takes place collectively and by agencies individually to reduce crime and anti social behaviour. In 2010/11 58.3% Gloucester residents who were asked said they were confident that the police and local council were dealing with the anti social behaviour and crime issues that matter – Gloucester's confidence figure was the highest in the county.

Priorities 2011/12

The priorities for Safer Gloucester, as highlighted in the Gloucestershire Community Safety Scanning Autumn 2010 document are:

Reduce Crime

Although serious acquisitive crime has reduced significantly over the period of the 2008 – 2011 Delivery Plan, the one priority set by the government is to Cut Crime. Safer Gloucester will continue to focus attention to reducing burglary (both domestic and non domestic), reducing car crime (theft from and of motor vehicles), reducing personal robbery and reducing criminal damage. The Partnership will seek to raise awareness of crime prevention initiatives to enable communities to work together with the statutory agencies to protect themselves, each other and their property.

Reduce Re-offending

The number of offenders and re-offenders in Gloucester over the last 12 months was 826, the largest number in the county. It is known that a very small proportion of offenders commit a disproportionate amount of crime, being responsible for over 1 in 10 offences committed. Since the introduction of the Priority and Prolific Offenders Scheme (a team of police officers, probation officers and drug workers working with the high offenders) at the end of 2004, the number of offences committed by those offenders has reduced by 63%. The unit continue working with 30 – 40 individuals, trying to prevent them from committing further offences and protecting our communities from harm.

The next stage is the introduction of the Integrated Offender Management Scheme where the same principles of successful partnership working are rolled out to a wider but less prolific audience.

Gloucestershire Probation Trust is a recent addition to Safer Gloucester and is a Criminal Justice Agency which manages some 2,000 offenders in the community and in prisons. Working closely with partners, they work to protect the public, cut crime, enforce the punishment of offenders in the community, ensure offenders' awareness of the effects of crime on victims and the public and rehabilitate offenders.

Reduce the Harm Caused by Alcohol and Illegal Drugs.

The scanning document highlights the numbers of assault with less serious injury (which, according to published guidance can be used as a proxy for alcohol related violent offences) being most commonly reported on Fridays, Saturdays and Sundays between the hours of 8pm and 4am. Safer Gloucester has taken a variety of measures to make the evening economy in Gloucester city centre a safe place. Since 2007/8 there has been a reduction in recorded offences year on year and every measure will be taken to continue this trend.

However, at the same time, concern has been raised by residents in some areas of the city, of young people under the age of 18, consuming alcohol and a report of one incident recently reached the national media when a large quantity of alcohol was seized by police from a local 16 year old. Information from the Accident and Emergency Department of Gloucestershire Royal Hospital shows that in 2010, 84 young people under the age of 18 were taken to A & E for treatment. Of those 84, 1 was 12 years old, 12 were 13 years old, 15 were 14 years old, 18 were 15, 15 were 16 years old and 23 were 17 years old; of these 33 were admitted for further treatment.

Over the last 12 months, 1,950 people have entered substance misuse treatment programmes in the county. 1,668 of these have given their postcode as Gloucestershire. Drugs have proven links to acquisitive crime.

Domestic Abuse

Over the next 3 years we can expect more than 50,000 Gloucestershire residents to become victims of domestic abuse and it is likely that as many as 22,000 of these victims will never disclose the abuse they experience to anyone at all. The number of calls to the county helpline has increased over the last 12 months from 3.1 per day in January 2010 to 9.4 per day in January 2011. In Gloucester the number of repeat high risk domestic abuse incidents referred to a Multi Agency Risk Assessment Conference (MARAC) has increased to 39% over the last 12 months. It is hoped to employ a MARAC coordinator in 2011/12 but a proportion of the county's domestic abuse service is at risk due to reduced funding in 2011/12. Safer Gloucester plans to continue to provide support for victims who wish to retract their statement in the hope that more successful prosecutions will be sought in the Specialist Domestic Abuse Court.

Anti Social Behaviour

Safer Gloucester takes the issues around anti social behaviour (ASB) very seriously and recognises that every agency has a vital role in tackling it. It is our aim to work together to ensure that safe and tolerant communities are built and maintained. A multi- agency team named Project SOLACE was introduced in 2010 to bring agencies together to deal with ASB. Gloucester City Homes in partnership with Gloucester City Council and Gloucestershire Constabulary, has taken on the management function of the team. Project SOLACE will deal with perpetrators to tackle their behaviour whilst supporting victims and witnesses throughout.

Hate Crime

Hate crime has been identified as a priority for Safer Gloucester and it is a particularly serious crime that can compromise the quality of life of individuals, spread fear amongst communities and is a threat to community cohesion. The partnership will focus on increasing the trust and confidence of residents to report hate crime and incidents and promoting the Hate Crime “Report It” helpline number.

How we will achieve our objectives

Safer Gloucester has a number of themed based multi agency action groups which meet at least quarterly (see structure plan page 9). These groups will respond to crime trends across the city and also in smaller locations in consultation with our communities. These groups are:

Crime Reduction Action Group made up of officers, community volunteers and representatives from the business sector who work together to keep crime low by means of raising awareness of crime prevention methods and examining and reviewing crime trends across the city.

Substance Action Group is a multi agency group of officers and members of the voluntary and community sector who work in their own environment and jointly to reduce the harm caused by substance misuse.

Neighbourhood Management Action Group is a multi agency strategic body that seeks to increase the level of community influence, confidence and trust in service provision in local areas.

Anti Social Behaviour Steering Group seeks to enhance the quality of life for our communities and as a multi agency partnership tackle persistent anti social behaviour.

Domestic Abuse and Sexual Violence Forum – a multi agency body of practitioners who support victims and survivors of domestic abuse and sexual violence by assessing and managing risk in each

case. The forum seeks to share best practice and resources in order to maximise provision and avoid duplication in a time of reducing resources.

Forest and Gloucester Hate Crime Action Group seeks to ensure that people and communities will be treated with fairness and equality where discrimination will be eliminated and diversity valued.

In addition to these groups there will be multi agency groups designated to tackle specific problems on a “task to finish” basis.

Road Safety

The Gloucestershire Road Safety Partnership brings together Gloucestershire County Council, Gloucestershire Police and Gloucestershire Fire and Rescue Service with the combined mission to: improve the quality of life for people living, working and travelling in Gloucestershire by reducing collisions and casualties on our roads, and promoting road safety skills for life.

The partnership aims to achieve the Government’s casualty reduction targets, and we are making good progress. In 2010, we experienced the lowest number of casualties ever on Gloucestershire’s roads. We will continue to work to reduce these figures even further through a combination of: education, training, publicity, engineering and enforcement measures, and we will work closely with all partners including the voluntary sector, community groups, and Public Health Gloucestershire.

Members

The Safer Gloucester Leadership Group meets six times a year and is an overarching body overseeing the work of the . Members receive reports of partnership activities with projects and monitor the progress against the local priorities for the city. At the same time each member has their own contribution towards assisting to reduce crime and the fear of crime.

Safer Gloucester has a range of action groups that address local issues and will work with the Local Policing Teams to address local concerns. The action groups are multi agency thus enabling ideas, resources and time to be shared to analyse and work together to solve identified problems.

Members of the Safer Gloucester Leadership Group are:

City Council Community Safety Team Officers
Elected Member of City Council
Gloucestershire Constabulary
Gloucestershire County Council Officer

Gloucestershire Fire and Rescue Service
Gloucestershire Police Authority
Gloucestershire Road Safety
Gloucestershire Probation Trust
NHS Gloucestershire

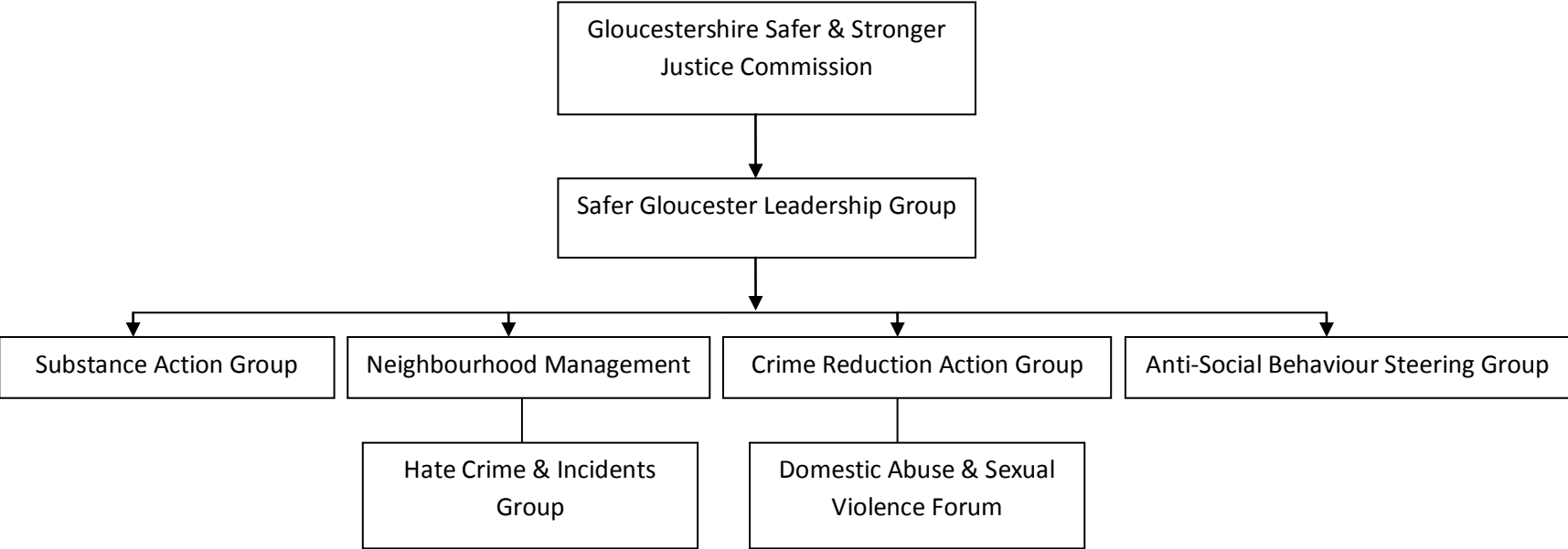
In addition the Action Groups will include some of the above and also representatives from:

Aspire Trust
Bromford Housing Association
City Council Officers from Economic Development, Environmental Services and Housing
English Churches Housing Association
Families Anonymous
Futures at Knightstone Housing Association
GAY-GLOS
GlosRec (Race Equality Council for Gloucestershire)
Gloucester City Centre Community
Gloucester City Homes
Gloucester Crime Prevention Panel
Gloucester Family Intervention Project
Gloucester Law Centre
Gloucester Licensed Victuallers Association
Gloucestershire Action for Refugees and Asylum Seekers
Gloucestershire Central Allocation Referral Point for Domestic Abuse
Gloucestershire Association for Voluntary and Community Action
Gloucestershire Crimestoppers
Gloucestershire Domestic Violence Support and Advocacy Project
Gloucestershire Emergency Accommodation Resource
Gloucestershire Housing Association
Gloucestershire Independent Domestic Violence Advisors
Gloucestershire Public Protection Bureau
Gloucestershire Rape Crisis
Gloucestershire Royal Hospital
Gloucestershire Sexual Assault Referral Centre
Gloucestershire Young People's Substance Misuse
Gloucestershire Witness Care Unit
Independence Trust
Infobuzz
Lighthouse Children's Centre
Neighbourhood Watch Association

Shopwatch
Stonham Housing Association
University of Gloucestershire
Victim Support
Youth Offending Team

Safer Gloucester Structure Plan

The following structure plan shows the current make up of Safer Gloucester including the themed based action groups.





www.safergloucester.co.uk

Email: cdpartnership@gloucester.gov.uk

Tel: 01452 396984